

# Mobiflex™ 200-M

## Mobile Welding Fume Extractor

Lincoln Electric's® Mobiflex™ 200-M is a portable, low vacuum/high volume disposable filtration system designed for medium duty extraction and filtration of welding fumes.

The lightweight and rugged design of the Mobiflex™ 200-M along with the standard front caster and rear wheels allows for easy portability. It is ideal for facilities that require welding fume extraction in multiple locations, including maintenance departments, general fabrication and job shops, and industrial welding environments.

The Mobiflex™ 200-M can be configured with Lincoln's® LFA 3.1 or LFA 4.1 fume extraction arms or with the 152 mm (6 in.) diameter, 5 m (16 ft.) long flexible hose and hood set.

Lincoln Electric's® fume extraction arms are designed to provide welders optimal motion and reach for their specific welding position(s) and work area. The arm lengths range from 3.1 meter (10 ft.) to 4.1 meters (13 ft.). For hard to reach areas such as confined spaces, the flexible hose and set can be easily carried to locations where an extraction arm just is not feasible.

The Mobiflex™ 200-M has an on-board internal extraction fan and is designed specifically for weld applications. It extracts weld fume through the arm, into the internal spark arrestor and finally through the unique LongLife® filter cartridge capturing the welding fume particulate. The particulate is collected on the inside of the cartridge, minimizing exposure to particulate during filter maintenance and disposal.

The Mobiflex™ 200-M filter system is recommended for consumable use of approximately 1500 lbs. (680 kg) of MIG wire or 1100 lbs. (500 kg) of stick and flux-cored wire before replacing.

Filter performance will be affected by process and application variables including: base metal(s), consumables(s), and coatings (oil) if applicable.

### Processes

Stick, TIG, MIG, Flux-Cored

### Advantage Lincoln

- Generous 735 CFM airflow with LFA 3.1/4.1 extraction arm.<sup>(1)</sup>
- Filter efficiency up to 99%<sup>(2)</sup>.
- 50 m<sup>2</sup> (164 ft<sup>2</sup>) LongLife® filter with ExtraCoat® pretreatment.
- Pressure differential filter indicator gauges amount of particulate in filter cartridge, indicating system maintenance and filter replacement.
- Internal aluminum mesh spark arrestor.
- One-year warranty on equipment; 30 days on filter cartridge.
- Low noise operation: 69dBA.



Shown:  
Mobiflex™ 200-M with  
optional Extraction Arm

### Mobiflex™ 200-M System includes:

- Filter, plastic housing, 8" flexible hose, 6 meter (19ft.) 115VAC input power cord and instruction manual.

NOTE: Extraction Arm of your choice is required.

<sup>(1)</sup> CFM level is dependent upon arm length, fan type and system maintenance.

<sup>(2)</sup> Per Din EN 60335-2-69 Standards.

### TECHNICAL SPECIFICATIONS

Product Name	Product Number	Filter Type/ Filter Size	Input Power	Input Current	Dimensions H x W x D mm (in.)	Net Weight kg (lbs.)
Mobiflex™ 200-M Base Unit	K1653-2	Pretreated Cellulose 50 m <sup>2</sup> (164 ft <sup>2</sup> )	115/1/60	12A	900 x 810 x 1210 (36 x 32 x 48)	111 (243)

**PERFORMANCE**

**Mechanical Filtering Technique**

The LongLife® filter has a surface area of 50 m<sup>2</sup> (164 ft<sup>2</sup>), making it one of the largest disposable filter cartridges in its class for collection of weld fume particulate. The combination of this with an ExtraCoat® pretreatment and the unique 3D-pleated structure results in a 99.8% filter efficiency, a longer life, and low operational costs. The ExtraCoat® pretreatment fills the micro pleats in the filter and reduces moisture. This increases its efficiency from the start of usage.

A pressure differential filter indicator located at front of unit, moves gradually from white to red as the filter becomes saturated with welding fume particulate, indicating when system maintenance and filter replacement is necessary. The washable aluminum prefilter sits inside the LongLife® filter to remove the large particulates and provide spark entrapment.



LongLife® Filter



LongLife® Filter inside of unit

**Extraction Arms**

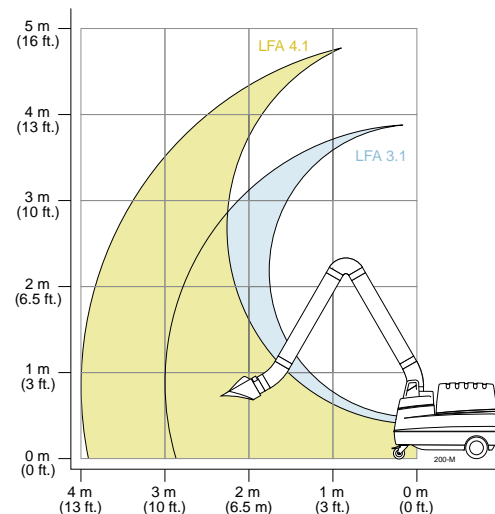
No matter if you are working in a small work station, under a low ceiling, or in a large fabrication area, one of Lincoln Electric's® various fume extraction arms for welding will work for you. The flexible extraction arms are built the Lincoln® way—rugged and reliable. Low vacuum extraction arms are designed for high volume/low velocity air movement to enable the arm to be positioned at a distance of 6-12 inches (152-304 mm) from the welding source. Designed with the welder in mind, the arms provide welders optimal motion and reach for their specific welding position(s) and work area.

The arms come equipped with the 360° rotatable hood for optimal positioning to welding source. This allows a larger work envelope with less repositioning of the arm and increased operator visibility. With the extraction arm correctly positioned, the welding fume particulate can be effectively drawn away from the operator's breathing zone, as well as eliminate the residual fume particulate that often rises and hovers within the facility.

With a unique spring-balanced internal mechanism, Lincoln's® fume extraction arms provide a long-lasting, user-friendly solution. The extraction arms external shell is made of solid, lightweight 203 mm (8 in.) diameter dent and scratch resistant tubing. Incorporated into the arm is an airflow throttle valve and extraction focus spoiler. A clear halogen lamp and automatic start/stop are available as recommended optional features. With the use of an arc sensor, the system automatically starts and stops the fan unit, providing hands-free operation and helping to conserve energy. All this combined provides a highly effective system with maximum efficiency and minimal disruption to welder productivity.



Rotatable Hood



Mobiflex™ 200-M Reach

**GENERAL OPTIONS**



**LFA 3.1 (10 ft.) and LFA 4.1 (13 ft.) Extraction Arm**  
Extraction arms with 360° rotatable hood, airflow throttle valve, extraction focus spoiler, and handle for every positioning. Hood lamp and automatic start/stop models available.

- Order:**  
**K2633-1 LFA 3.1**  
**K2633-2 LFA 3.1 with lamp/arc sensor**  
**K2633-3 LFA 4.1**  
**K2633-4 LFA 4.1 with lamp/arc sensor**



**Starter Overload Switch for 230V**  
This overload switch retrofits the extraction unit for 230V operation.  
**Order K1494-3**



**LongLife® 200-M Filter**  
Standard replacement LongLife® filter with ExtraCoat® treatment that provides a 99.8% filter efficiency.  
**Order K1673-1**



**Hose and Hood Set**  
Completely flexible extraction hose with magnetic hood set. Ideal for those hard to access fume extraction applications. Comes with 152 mm (6") diameter hose and reinforced outside steel rings to protect against wear and crushing.  
**Order K1668-1**



**Activated Carbon Filter**  
Mounts over LongLife® 200-M Filter and is recommended to neutralize welding fume odors.  
**Order K1852-1**



**Lamp Kit with Arc Sensor**  
To conserve energy and extend the life of your system, order the lamp kit with arc sensor. It senses an arc while the lamp illuminates the work area. The arc sensor turns on the unit when it senses an arc flash and automatically turns off 20 seconds after the arc goes out. Also includes a manual override on/off switch that works independently of the arc sensor. Kit includes work lamp with arc sensor housing, switch bank, and wiring.  
**Order K1706-2**

*Consult your local Lincoln Representative to help you decide which options are right for you!*

**MOBIFLEX™ 200-M ORDER FORM**

PRODUCT DESCRIPTION	ORDER NUMBER	QUANTITY	PRICE
<b>Mobilflex™ 200-M Base Unit</b>	<b>K1653-2</b>		
<b>Choose an Extraction Arm or Hose</b>			
LFA 3.1 – 10 ft. Extraction Arm	K2633-1		
LFA 3.1 – 10 ft. Extraction Arm with Lamp/Arc Sensor	K2633-2		
LFA 4.1 – 13 ft. Extraction Arm	K2633-3		
LFA 4.1 – 13 ft. Extraction Arm with Lamp/Arc Sensor	K2633-4		
Hose and Hood Set, 5 meter (16 ft.)	K1668-1		
<b>Options</b>			
Lamp Kit with Arc Sensor	K1706-2		
Starter Overload Switch for 230V	K1494-3		
<b>Filter Options</b>			
LongLife® 200-M Filter	K1673-1		
Active Carbon Filter	K1852-1		
	<b>TOTAL:</b>		

**Environmental Systems Family**



**High & Low Vacuum Solutions**



**CUSTOMER ASSISTANCE POLICY**

The business of The Lincoln Electric Company® is manufacturing and selling high quality welding equipment, consumables, and cutting equipment. Our challenge is to meet the needs of our customers and to exceed their expectations. On occasion, purchasers may ask Lincoln Electric for information or advice about their use of our products. Our employees respond to inquiries to the best of their ability based on information provided to them by the customers and the knowledge they may have concerning the application. Our employees, however, are not in a position to verify the information provided or to evaluate the engineering requirements for the particular weldment. Accordingly, Lincoln Electric does not warrant or guarantee or assume any liability with respect to such information or advice. Moreover, the provision of such information or advice does not create, expand, or alter any warranty on our products. Any express or implied warranty that might arise from the information or advice, including any implied warranty of merchantability or any warranty of fitness for any customers' particular purpose is specifically disclaimed.

Lincoln Electric is a responsive manufacturer, but the selection and use of specific products sold by Lincoln Electric is solely within the control of, and remains the sole responsibility of the customer. Many variables beyond the control of Lincoln Electric affect the results obtained in applying these types of fabrication methods and service requirements.

Subject to Change – This information is accurate to the best of our knowledge at the time of printing. Please refer to [www.lincolnelectric.com](http://www.lincolnelectric.com) for any updated information.



**THE LINCOLN ELECTRIC COMPANY®**

22801 St. Clair Ave., Cleveland, OH 44117-1199 • 216.481.8100 • [www.lincolnelectric.com](http://www.lincolnelectric.com)